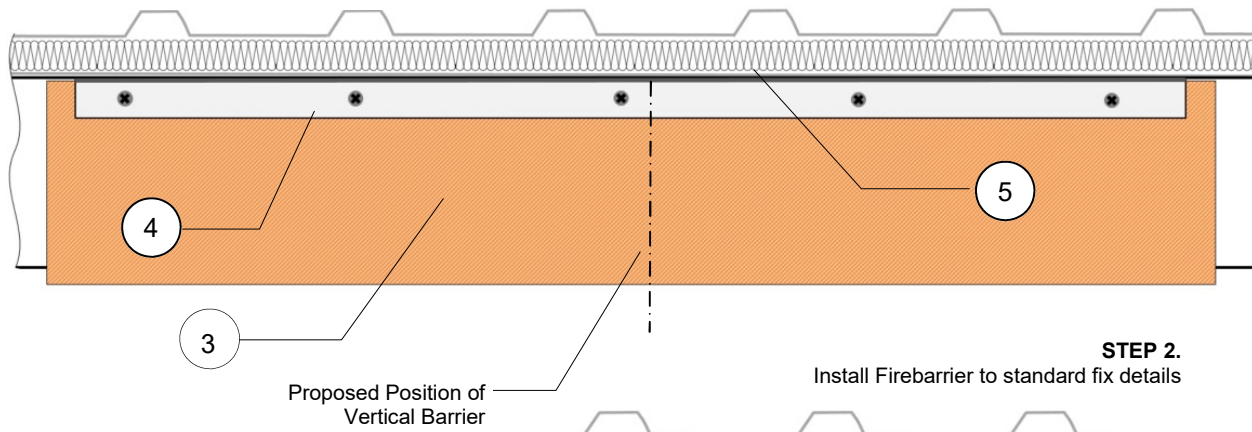
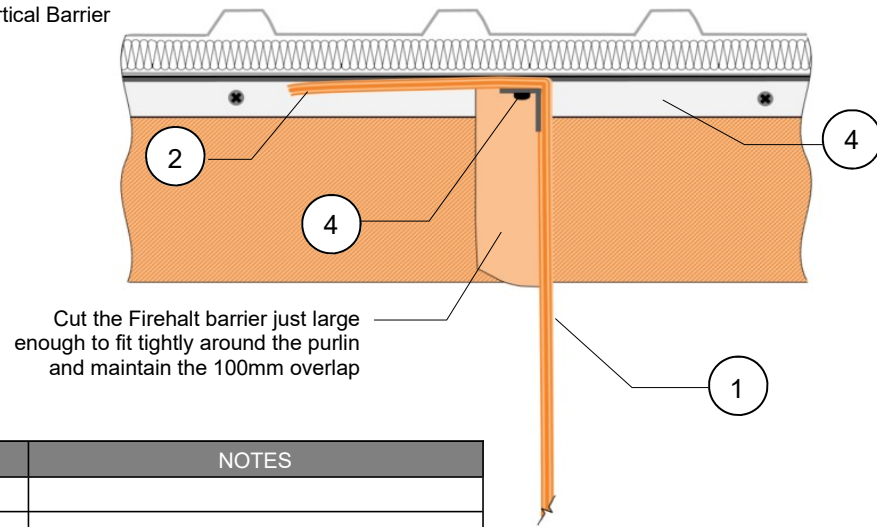


STEP 1.
Fit a Pre-Wrap of Firebarrier



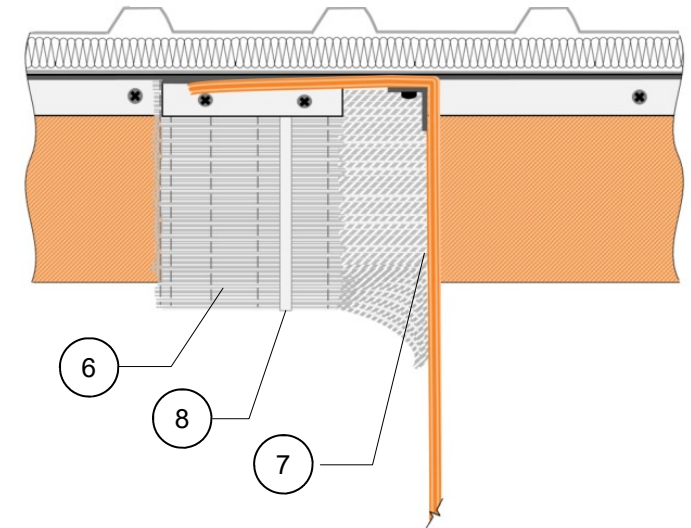
STEP 2.

Install Firebarrier to standard fix details



STEP 3.

Install FIREHALT BRUSHSEAL to 3 sides of the wrapped Purlin. Secure with 25mm Galv Angle



#	DESCRIPTION	NOTES
1	FIREHALT BARRIER	
2	100mm OVERLAP	
3	BARRIER PRE-WRAP	300mm Both Sides of Barrier
4	25 x 25 x 0.7mm GALV ANGLE	250mm Fixing Centres
5	FIXABLE ROOF SHEET	
6	BRUSHSEAL	
7	BEADS OF FIREHALT HT ADHESIVE	
8	S/S CABLE TIE OR GALV ANGLE	



Tel : +44 (0)161 344 2484
 Fax : +44 (0)161 344 2486
 Email : sales@firehalt.com
 Web : www.firehalt.com

Fixing detail may not be suitable for all applications. If in doubt seek assistance from our technical staff or another qualified person before installation

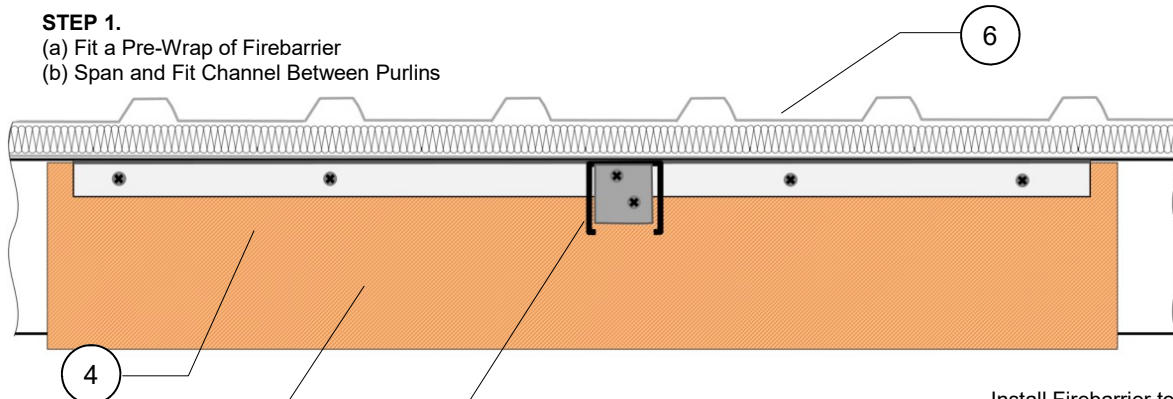
Title: Fixing Across Metal & Timber Purlins (With Fixable Roof Sheet)

Products: All Firehalt Barriers - Except
 Firehalt 90:60
 Firehalt 120:60

Fix Detail : # 7b
 Version: 3
 Date: 04/04/2019

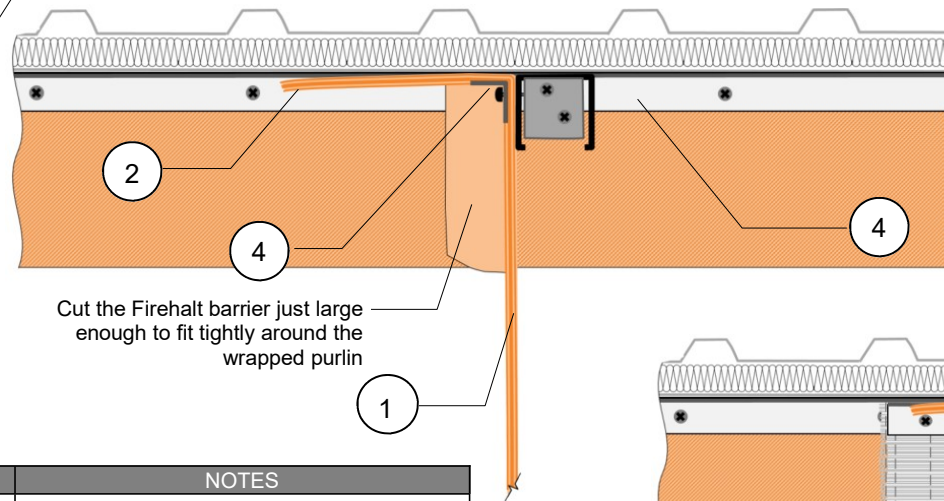
STEP 1.

- (a) Fit a Pre-Wrap of Firebarrier
- (b) Span and Fit Channel Between Purlins



STEP 2.

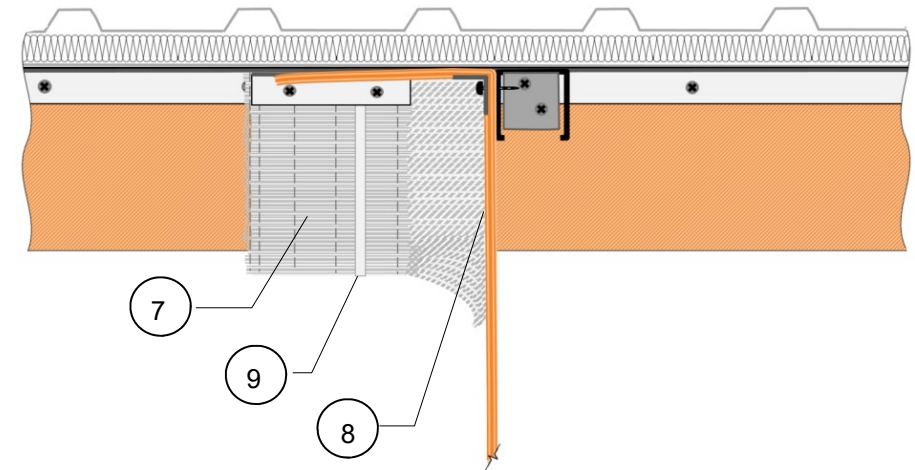
Install Firebarrier to standard fix details



Cut the Firehalt barrier just large enough to fit tightly around the wrapped purlin

STEP 3.

Install BRUSHSEAL to 3 sides of the wrapped Purlin. Secure with S/S strap & 25mm Angle



Make fixing tabs at both ends of channel by cutting min. 40mm along each corner and folding the side tabs inwards. Then bend the top tab down and secured to the purlins

#	DESCRIPTION	NOTES
1	FIREHALT BARRIER	
2	100mm OVERLAP	
3	BARRIER PRE-WRAP	
4	25 x 25 x 0.7mm GALV ANGLE	250mm Fixing Centres
5	41mm METSTRUT CHANNEL	
6	NON-FIXABLE ROOF SHEET	
7	BRUSHSEAL	
8	BEADS OF FIREHALT HT ADHESIVE	
9	S/S CABLE TIE OR GALV ANGLE	



Tel : +44 (0)161 344 2484
 Fax : +44 (0)161 344 2486
 Email : sales@firehalt.com
 Web : www.firehalt.com

Fixing detail may not be suitable for all applications. If in doubt seek assistance from our technical staff or another qualified person before installation

Title: Top Fix Across Metal & Timber Purlins (With a Non-Fixable Roof Sheet)

Products: All Firehalt Barriers - Except
 Firehalt 90:60
 Firehalt 120:60

Fix Detail : # 7c
 Version: 3
 Date: 04/04/2019