

#	DESCRIPTION	NOTES
1	100mm BARRIER OVERLAPPING JOINT	
2	100mm OVERLAP	At all peripheral fixing points
3	25 x 25 x 0.8mm CLAMPING ANGLE	250mm Fixing Centres
4	MF5 CHANNEL OR SIMILAR	Spaced at 1100-1200mm at each overlapping joint or 600mm if required
5	SUPPORT HANGER	
6	EXISTING CEILING SYSTEM	

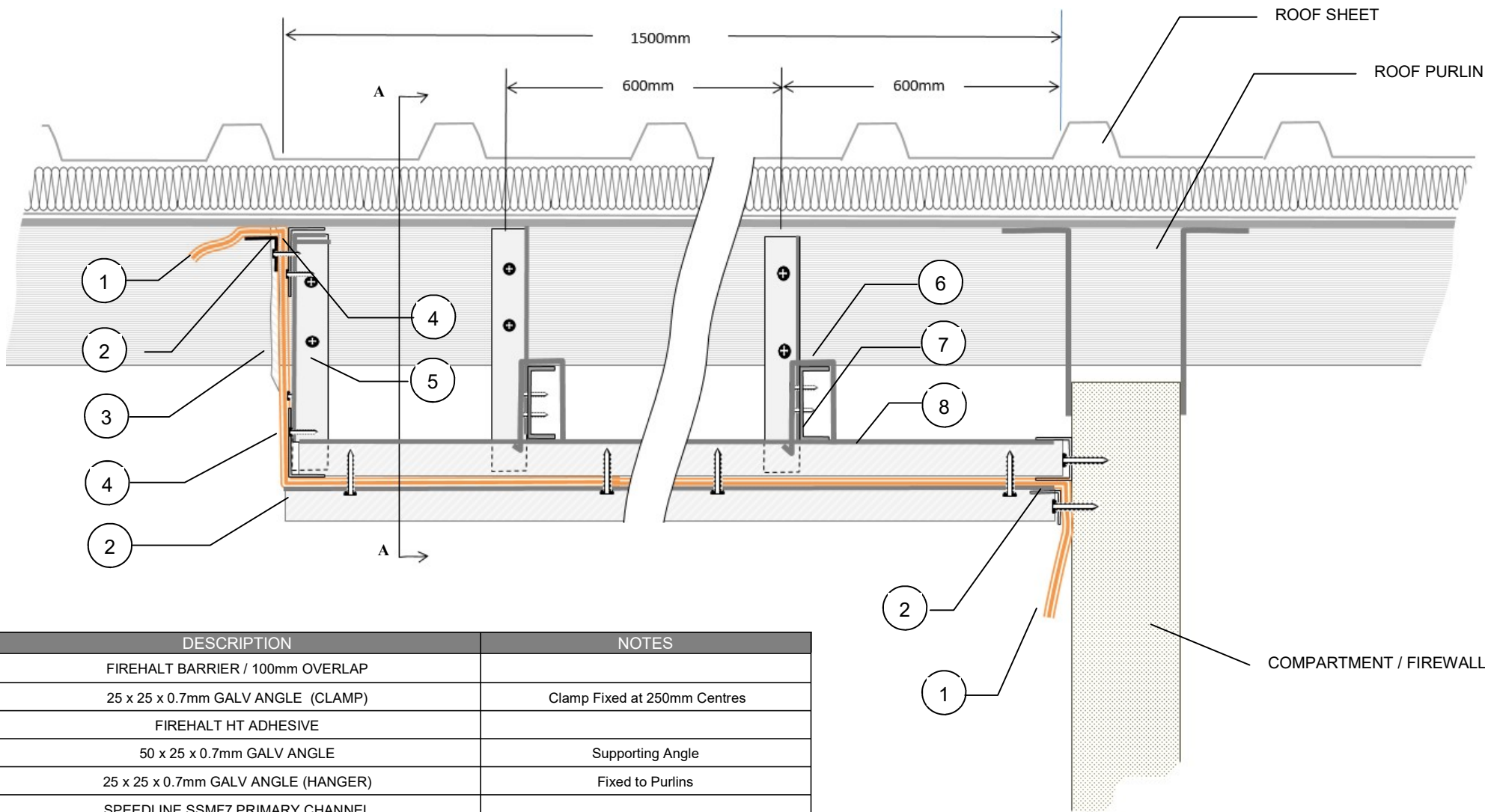


Tel : +44 (0)161 344 2484
 Fax : +44 (0)161 344 2486
 Email : sales@firehalt.com
 Web : www.firehalt.com

Fixing detail may not be suitable for all applications. If in doubt seek assistance from our technical staff or another qualified person before installation

Title: FIREHALT HORIZONTAL CEILING MEMBRANE	Products: Firehalt Ultralite 60 Firehalt 60:30 Firehalt 120:30 Firehalt 90:60	Fix Detail : # 10
	Certification Ref: IFC 1336 / IFC 1337/ WF/ 380635 / WF 3324785_2	Version: 5
		Date: 19/11/18

SIDE ELEVATION



#	DESCRIPTION	NOTES
1	FIREHALT BARRIER / 100mm OVERLAP	
2	25 x 25 x 0.7mm GALV ANGLE (CLAMP)	Clamp Fixed at 250mm Centres
3	FIREHALT HT ADHESIVE	
4	50 x 25 x 0.7mm GALV ANGLE	Supporting Angle
5	25 x 25 x 0.7mm GALV ANGLE (HANGER)	Fixed to Purlins
6	SPEEDLINE SSMF7 PRIMARY CHANNEL	
7	SPEEDLINE AMF8 PRE-FORMED CLIP	
8	SPEEDLINE SSMF5 FURRING CHANNEL	



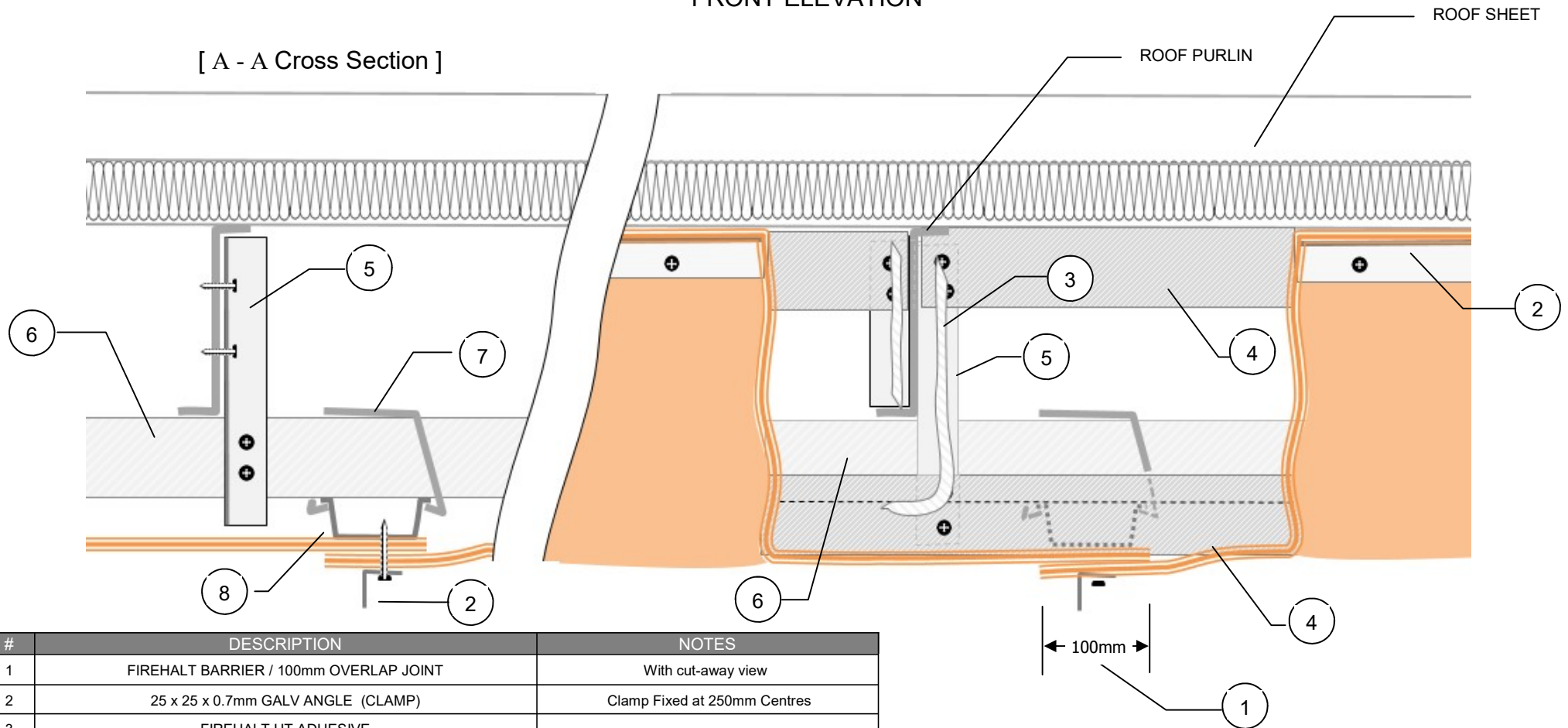
Tel : +44 (0)161 344 2484
 Fax : +44 (0)161 344 2486
 Email : sales@firehalt.com
 Web : www.firehalt.com

Fixing detail may not be suitable for all applications. If in doubt seek assistance from our technical staff or another qualified person before installation

Title: Horizontal Control Zone - Across Purlins	Products: Firehalt Barriers : Firehalt 90:60	Fix Detail : # 13a
Certification Ref: IFCC 1336		Version: 3
		Date: 10/062018

FRONT ELEVATION

[A - A Cross Section]



#	DESCRIPTION	NOTES
1	FIREHALT BARRIER / 100mm OVERLAP JOINT	With cut-away view
2	25 x 25 x 0.7mm GALV ANGLE (CLAMP)	Clamp Fixed at 250mm Centres
3	FIREHALT HT ADHESIVE	
4	50 x 25 x 0.7mm GALV ANGLE	Supporting Angle
5	25 x 25 x 0.7mm GALV ANGLE (HANGER)	Fixed to Purlins
6	SPEEDLINE SSMF7 PRIMARY CHANNEL	
7	SPEEDLINE AMF8 PRE-FORMED CLIP	
8	SPEEDLINE SSMF5 FURRING CHANNEL	

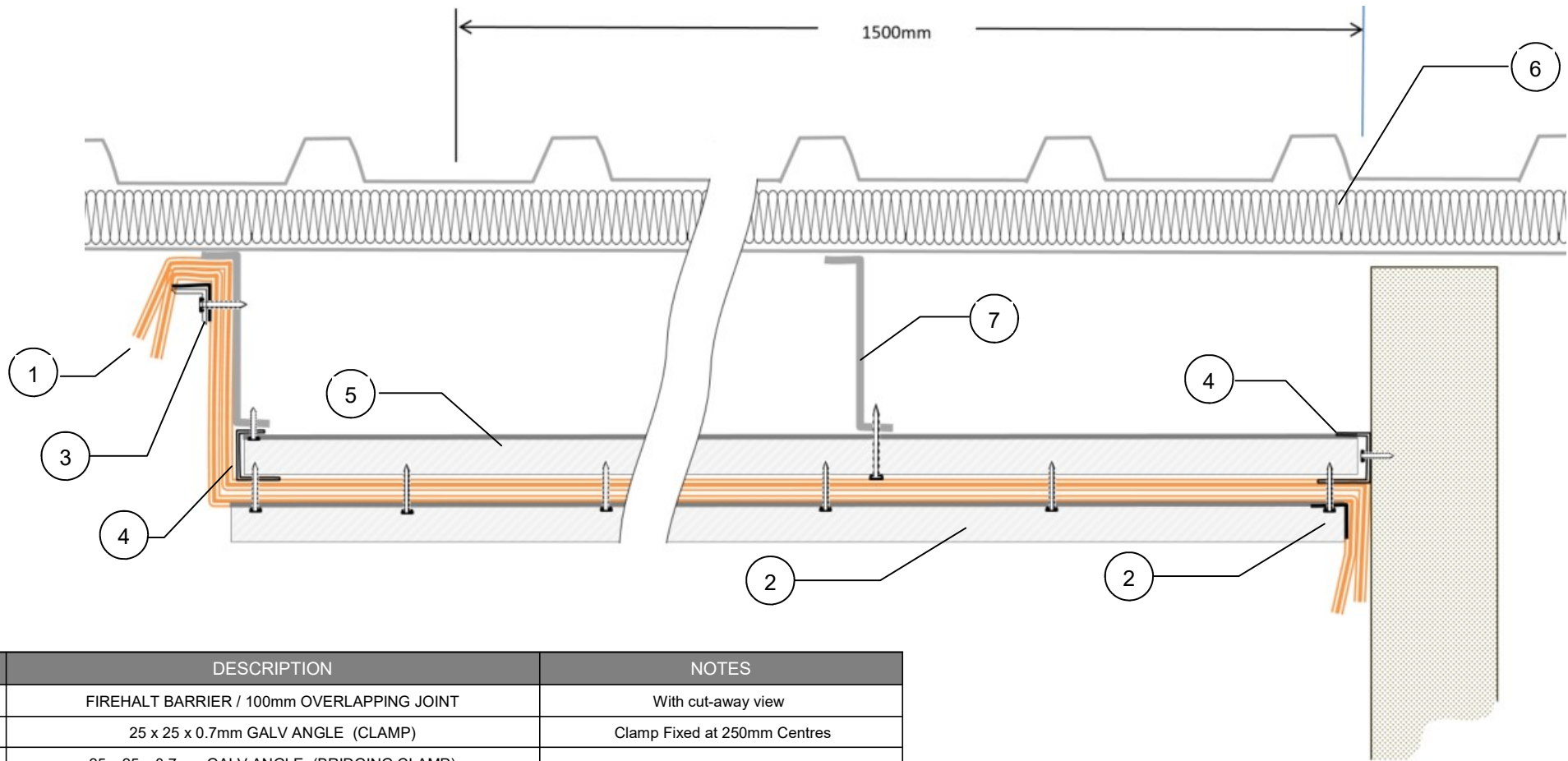


Tel : +44 (0)161 344 2484
 Fax : +44 (0)161 344 2486
 Email : sales@firehalt.com
 Web : www.firehalt.com

Fixing detail may not be suitable for all applications. If in doubt seek assistance from our technical staff or another qualified person before installation

Title: Horizontal Control Zone - Across Purlins	Products: Firehalt Barriers : Firehalt 90:60	Fix Detail : # 13 b
Certification Ref: IFCC 1336		Version: 3
		Date: 10/062018

SIDE ELEVATION



#	DESCRIPTION	NOTES
1	FIREHALT BARRIER / 100mm OVERLAPPING JOINT	With cut-away view
2	25 x 25 x 0.7mm GALV ANGLE (CLAMP)	Clamp Fixed at 250mm Centres
3	25 x 25 x 0.7mm GALV ANGLE (BRIDGING CLAMP)	
4	SPEEDLINE SSMF6A PERIMETER CHANNEL	
5	SPEEDLINE SSMF5 FURRING CHANNEL	
6	ROOF SHEET	
7	ROOF PURLIN	



Tel : +44 (0)161 344 2484
 Fax : +44 (0)161 344 2486
 Email : sales@firehalt.com
 Web : www.firehalt.com

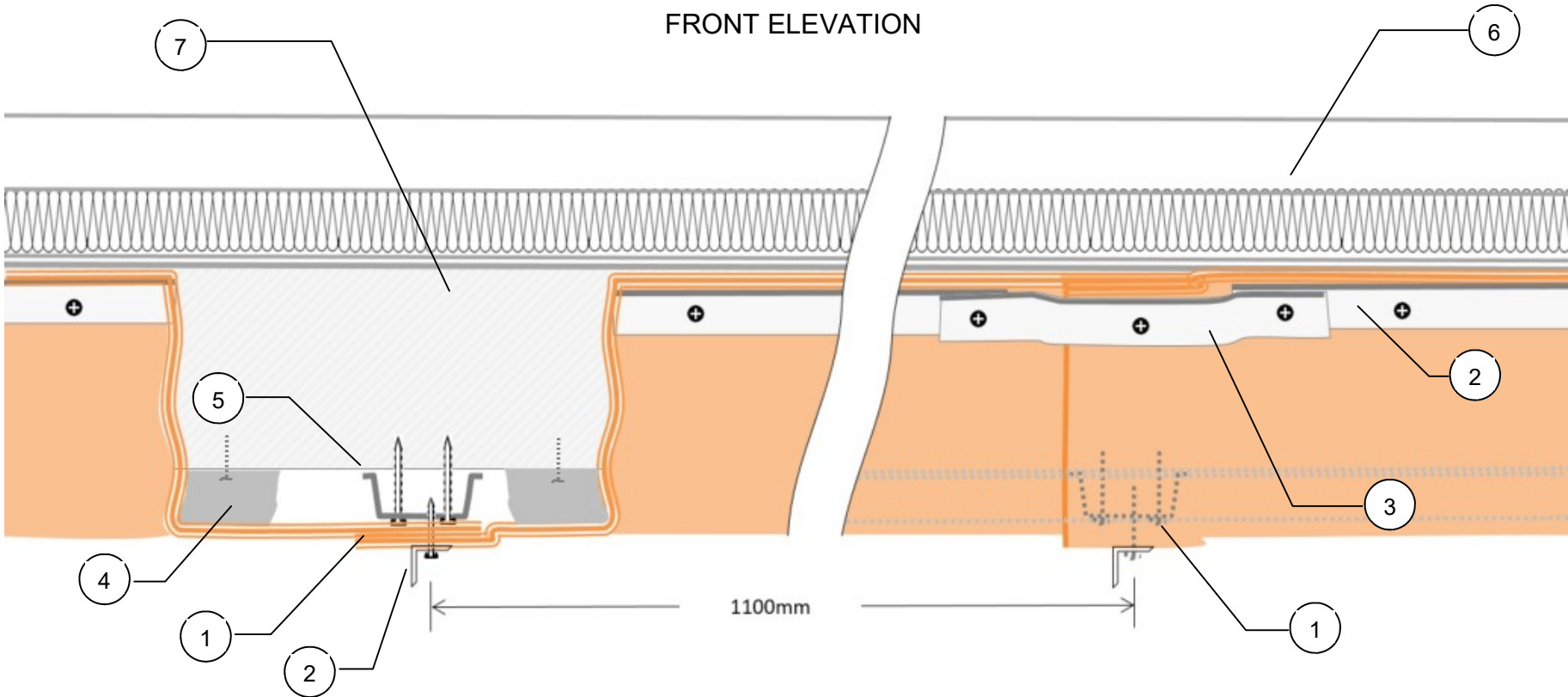
Fixing detail may not be suitable for all applications. If in doubt seek assistance from our technical staff or another qualified person before installation

Title:	Horizontal Control Zone - Along Purlins
Certification Ref:	IFCC 1336

Products:	Firehalt Barriers : Firehalt 90:60
-----------	---------------------------------------

Fix Detail :	# 13 c
Version:	3
Date:	10/062018

FRONT ELEVATION



#	DESCRIPTION	NOTES
1	FIREHALT BARRIER / 100mm OVERLAPPING JOINT	With cut-away view
2	25 x 25 x 0.7mm GALV ANGLE (CLAMP)	Clamp Fixed at 250mm Centres
3	25 x 25 x 0.7mm GALV ANGLE (BRIDGING CLAMP)	
4	SPEEDLINE SSMF6A PERIMETER CHANNEL	
5	SPEEDLINE SSMF5 FURRING CHANNEL	
6	ROOF SHEET	
7	ROOF PURLIN	



Tel : +44 (0)161 344 2484
 Fax : +44 (0)161 344 2486
 Email : sales@firehalt.com
 Web : www.firehalt.com

Fixing detail may not be suitable for all applications. If in doubt seek assistance from our technical staff or another qualified person before installation

Title: Horizontal Control Zone - Along Purlins	Products: Firehalt Barriers : Firehalt 90:60	Fix Detail : # 13 d Version: 3 Date: 10/062018
Certification Ref: IFCC 1336		