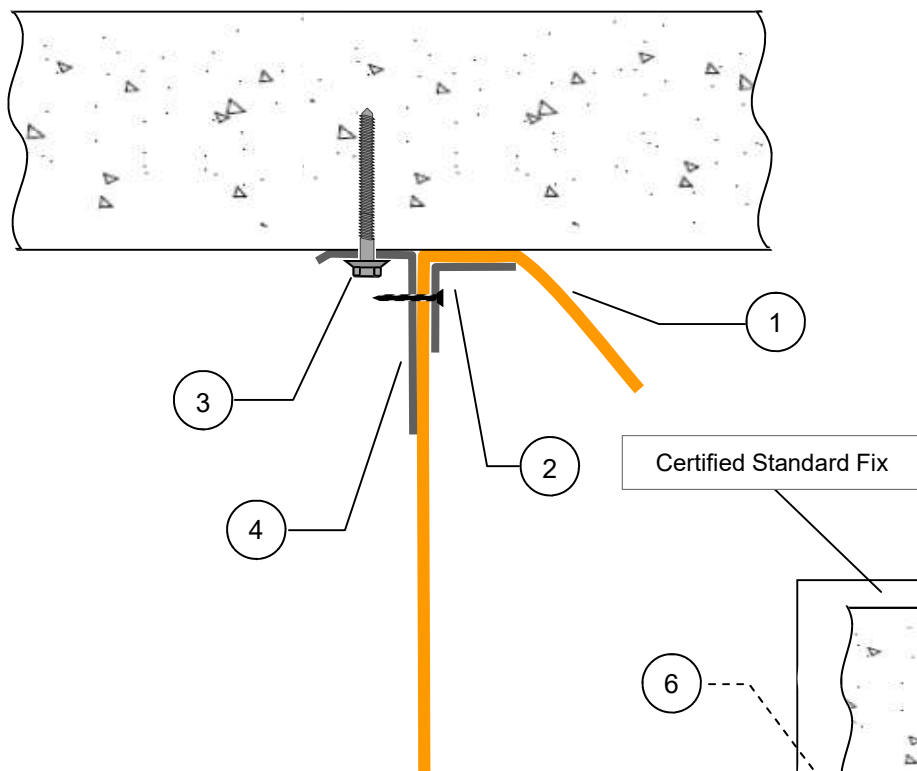
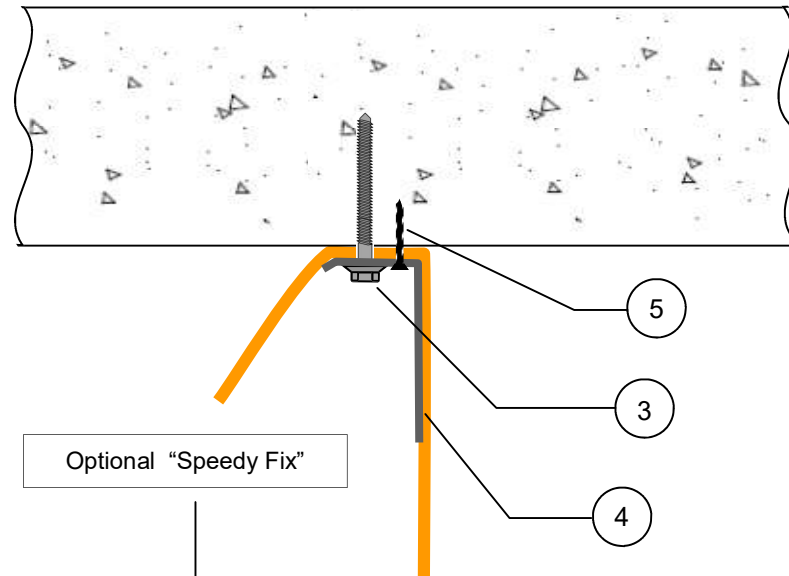


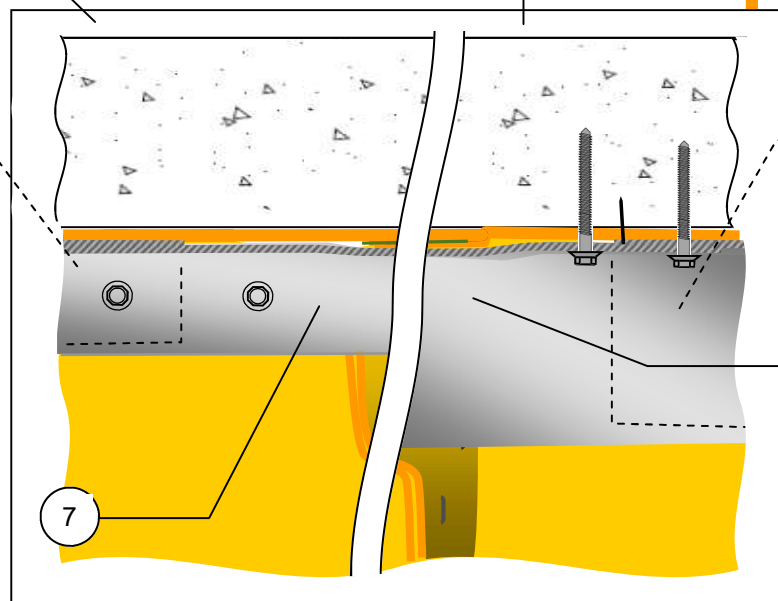
Option 1.



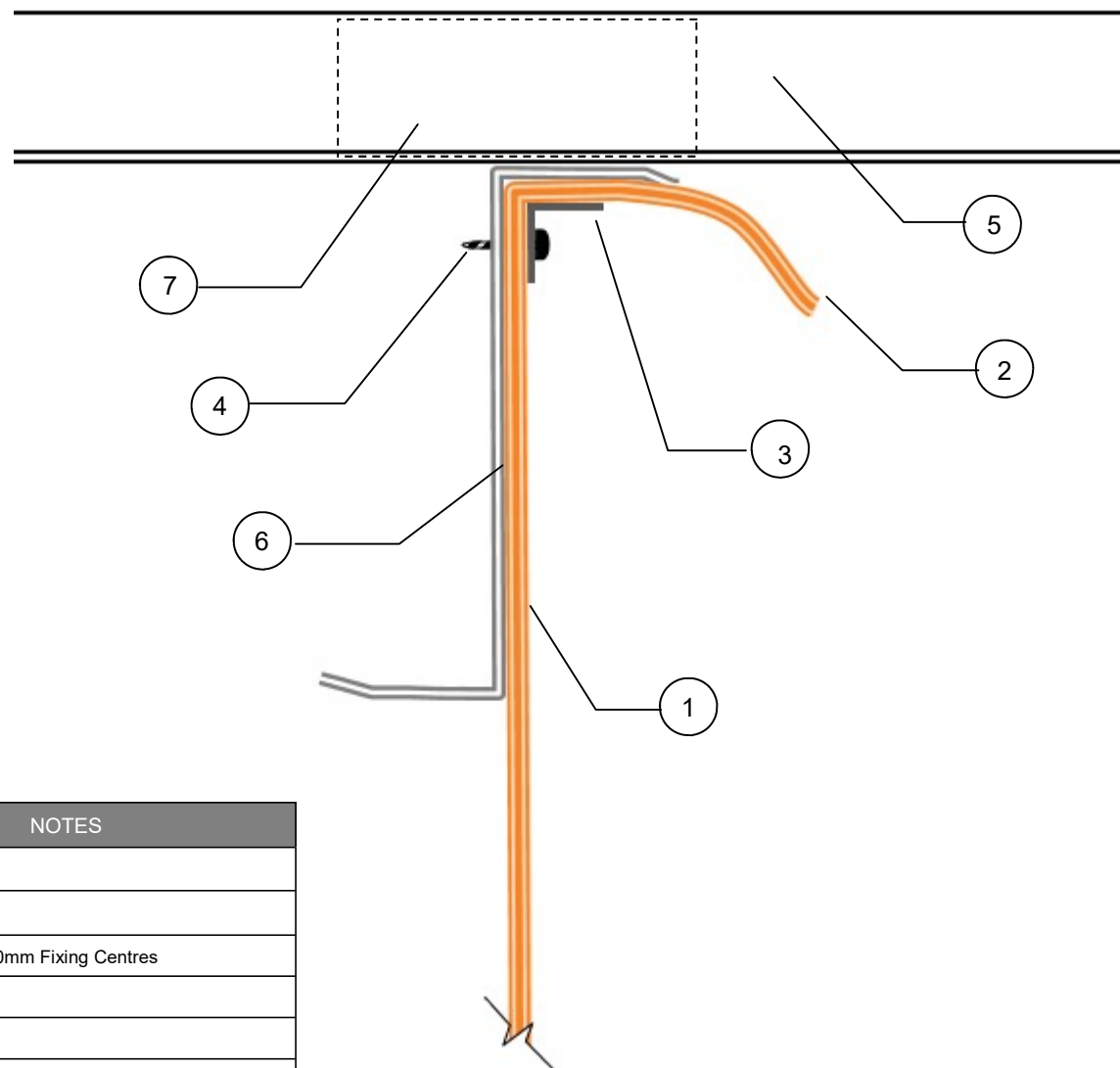
Option 2.



#	DESCRIPTION	NOTES
1	FIREHALT BARRIER / 100mm OVERLAP	At all Peripheral Fixing Points
2	25 x 25 x 0.7mm GALV ANGLE	250mm Fixing Centres
3	SUITABLE FIXING ANCHORS	250mm Fixing Centres
4	50 x 25 x 0.7mm GALV ANGLE	250mm Fixing Centres
5	SUITABLE TEMPORARY 1st FIXING	
6	1st FIX CLAMPING ANGLES	
7	50 x 25 x 0.7mm GALV ANGLE	Used as Speedy Fix Clamping



BRIDGING ANGLES
Individual clamping angles should be left short on either side of a vertical joint. Once the stapled joint is complete a bridging piece should be inserted to complete the top fix. This should be long enough to overlap the clamping angles by approx 100mm.



#	DESCRIPTION	NOTES
1	FIREHALT BARRIER	
2	100mm OVERLAP	
3	25 x 25 x 0.7mm GALV ANGLE	250mm Fixing Centres
4	SUITABLE FIRE RATED FIXING	
5	NON-FIXABLE ROOF SHEET	
6	Z ROOF PURLIN	
7	FIRE RATED PROFILE ROOF BLOCK	



Tel : +44 (0)161 344 2484
 Fax : +44 (0)161 344 2486
 Email : sales@firehalt.com
 Web : www.firehalt.com

Fixing detail may not be
 suitable for all applications.
 If in doubt seek assistance
 from our technical staff or
 another qualified person
 before installation

Title: Top Fix From Metal Purlins
 (Non-Fixable Roof Sheet)

FOA Ref:

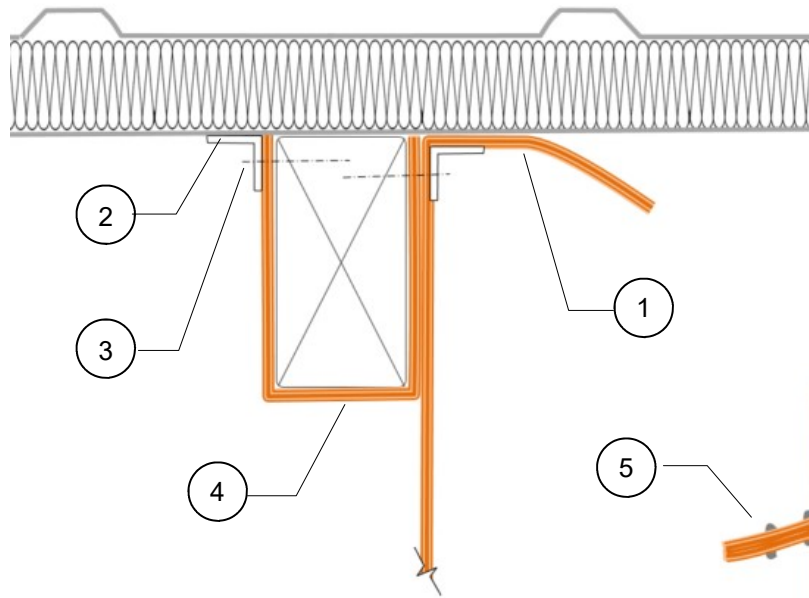
Products: Firehalt Barriers :
 SF
 Ultralite 30
 30:30
 60:30
 120:30

Fix Detail # 6a

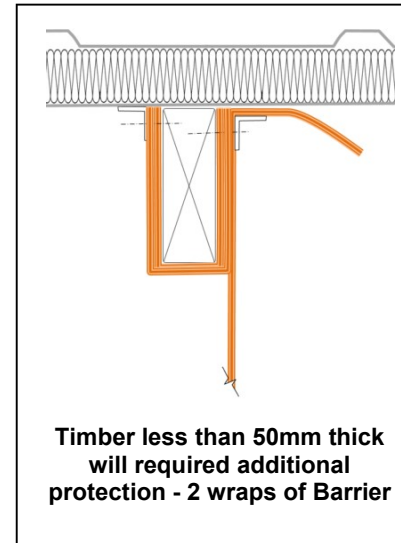
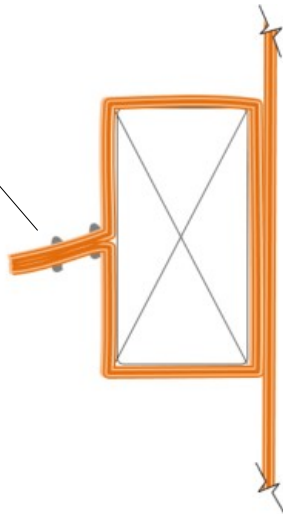
Version: 2

Date: 26/04/2019

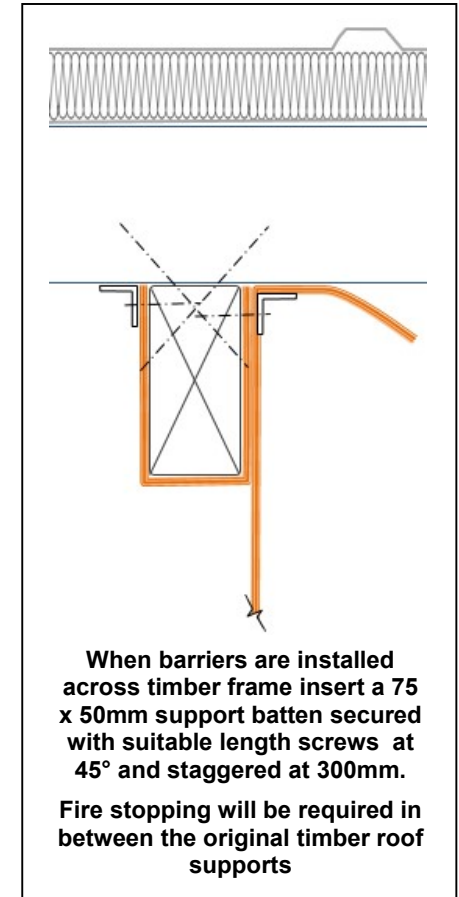
**Top Fix or other 3 sided
peripheral fixing.**



**Protection required
for any frame
supporting timber**

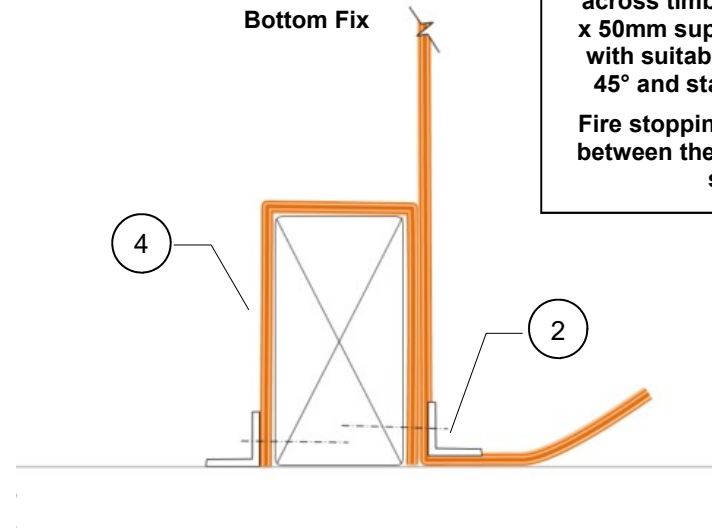


**Timber less than 50mm thick
will required additional
protection - 2 wraps of Barrier**



**When barriers are installed
across timber frame insert a 75
x 50mm support batten secured
with suitable length screws at
45° and staggered at 300mm.
Fire stopping will be required in
between the original timber roof
supports**

Bottom Fix



#	DESCRIPTION	NOTES
1	FIREHALT BARRIER / 100mm OVERLAP	At all Peripheral Fixing Points
2	25 x 25 x 0.7mm GALV ANGLE	250mm Fixing Centres
3	SUITABLE LENGTH FIXINGS	Allowing for Timber Char Rates
4	PROTECTIVE WRAP OF BARRIER	
5	50mm STAPLED JOINT	



Tel : +44 (0)161 344 2484
Fax : +44 (0)161 344 2486
Email : sales@firehalt.com
Web : www.firehalt.com

**Fixing detail may not be
suitable for all applications.
If in doubt seek assistance
from our technical staff or
another qualified person
before installation**

Title:
Fixing to Timber Frame

FOA Ref: WF 179691

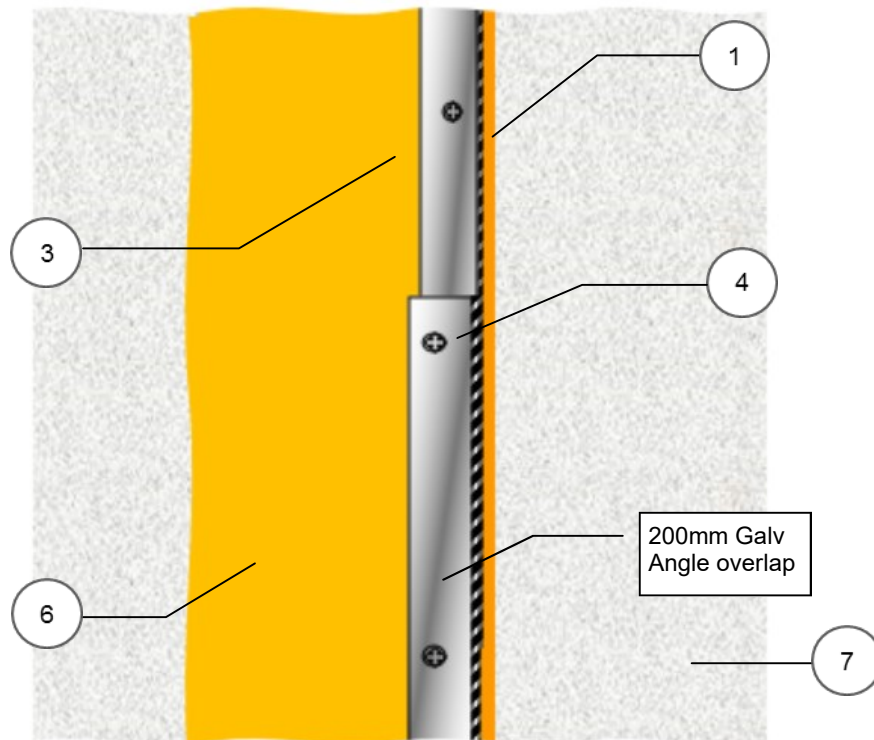
Products:
All Barriers - Except :
Firehalt SF
Firehalt 90:60
Firehalt 120:60

Fix Detail : # 7a

Version: 5

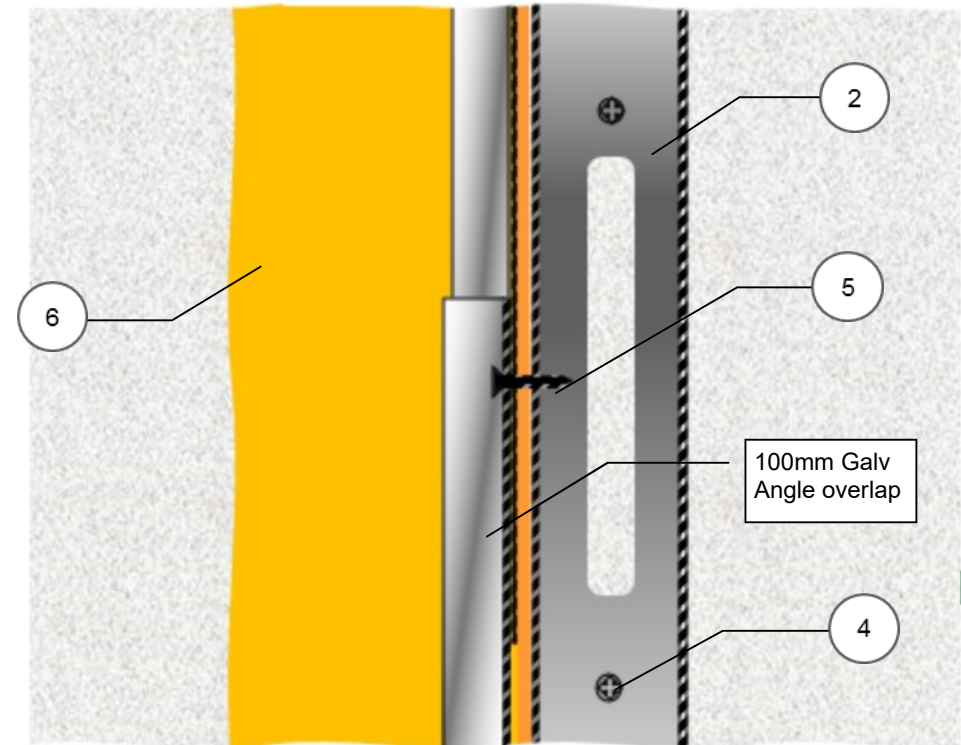
Date: 20/05/2019

Option 1. Secure to wall through galv angle with suitable Fixings at 250mm centres

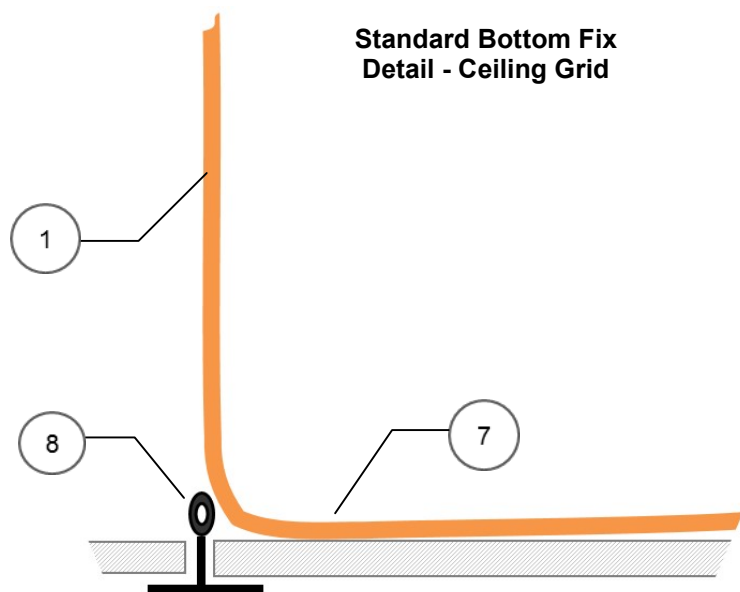


#	DESCRIPTION	NOTES
1	FIREHALT BARRIER	CROSS SECTION
2	50mm STUD/50 X 25mm GALV ANGLE	250mm FIXING CENTRES
3	25 X 25mm GALV ANGLE	250mm FIXING CENTRES
4	ANCHOR FIXINGS	
5	SELF TAP SCREWS	
6	100mm OVERLAP	
7	SIDE WALL	

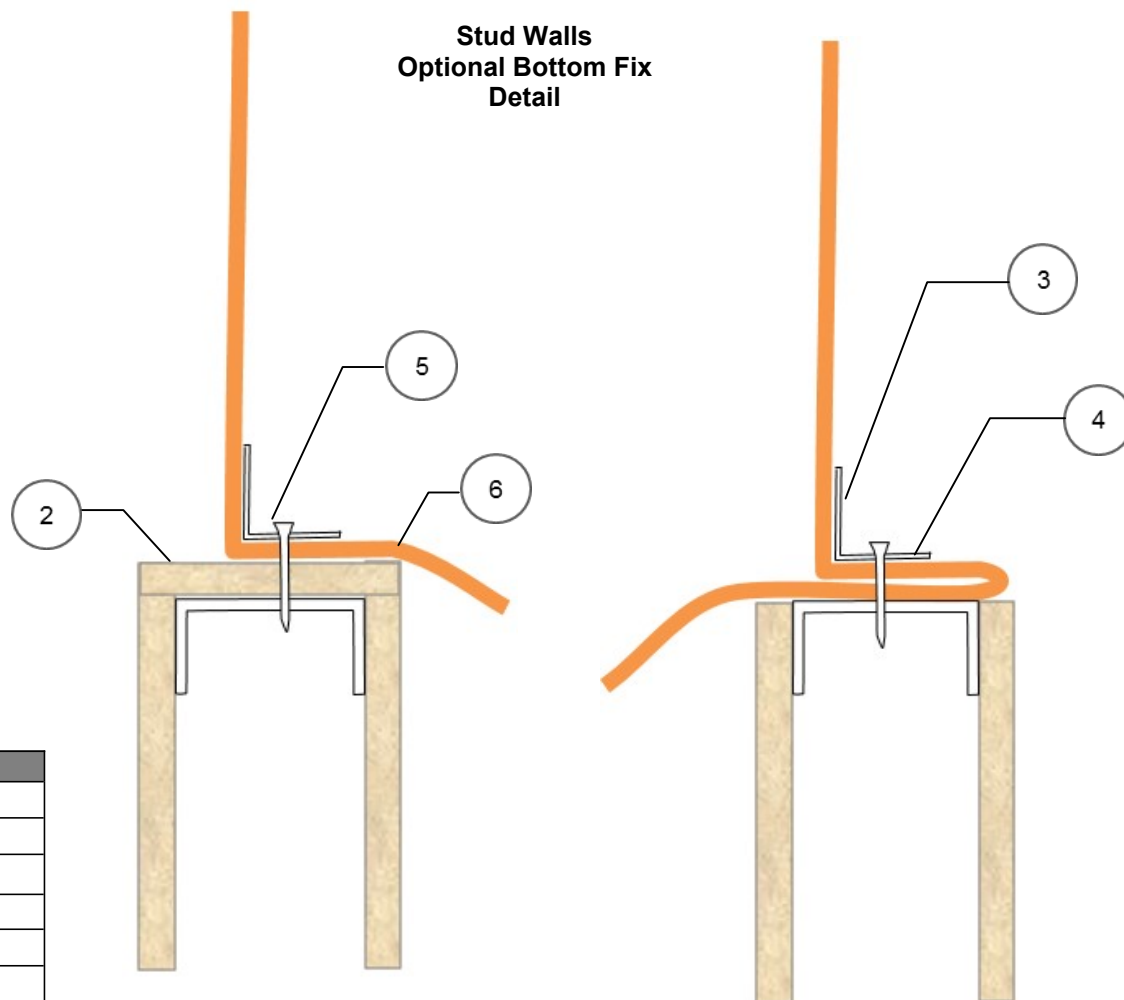
Option 2. First secure 50 x 25mm Angle or 50mm Stud to Wall with suitable fixings at 250mm centres.



**Standard Bottom Fix
Detail - Ceiling Grid**

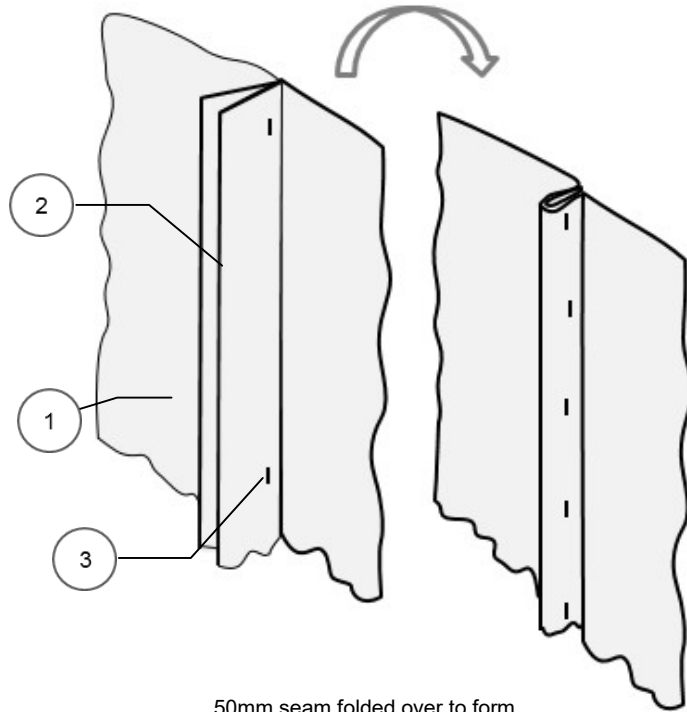


**Stud Walls
Optional Bottom Fix
Detail**



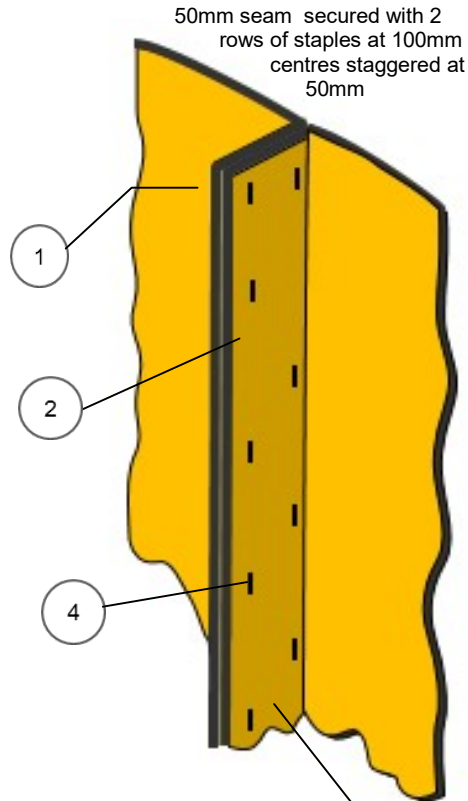
#	DESCRIPTION	NOTES
1	FIREHALT BARRIER	See Product List
2	PLASTERBOARD/FIREBOARD CAP	
3	25 X 25mm GALV ANGLE	
4	FOLDED FIREHALT BARRIER CAP	If Board Capping Is Missing
5	SELF TAP SCREWS	Min. 250mm Fixing Centres
6	100mm OVERLAP	
7	400mm OVERLAP	
8	EXISTING CEILING SYSTEM	
9		

FirehaltSF Smoke & Flame Barriers ONLY



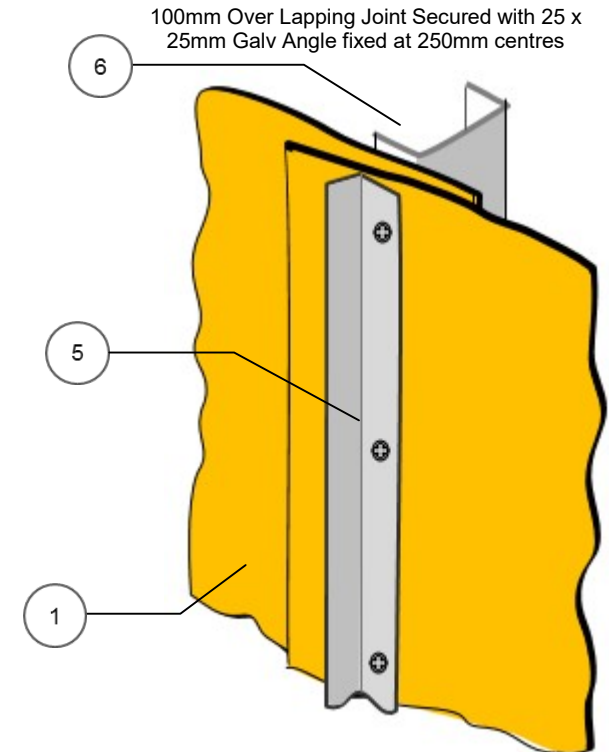
50mm seam folded over to form secure 25mm joint. Stapled at 100mm centres

All Firehalt Insulated Barriers



50mm seam secured with 2 rows of staples at 100mm centres staggered at 50mm

Where Additional Metal Support is Required



When forming a vertical or horizontal joining seam allow the adjoining barriers to overlap by approx 125mm. When put together this will ensure the raised seam meets with the minimum requirement of 50mm.

#	DESCRIPTION	NOTES
1	FIREHALT BARRIER	
2	HORIZONTAL & VERTICAL JOINT SEAMS	MINIMUM 50mm
3	FIREHALT STAPLES	8mm OR 10mm
4	FIREHALT STAPLES	12 mm OR 16mm
5	25 X 25mm GALV ANGLE	FIXINGS AT 250mm CENTRES
6	METAL STUD OR METSTRUT	



Tel : +44 (0)161 344 2484
Fax : +44 (0)161 344 2486
Email : sales@firehalt.com
Web : www.firehalt.com

Fixing detail may not be suitable for all applications. If in doubt seek assistance from our technical staff or another qualified person before installation

Title:
Standard Vertical & Horizontal Joining Seams

FOA Ref: LPCB 552a / IFCC 1334

Products:
Firehalt SF and all Insulated Barriers
Except :
Firehalt 90:60
Firehalt 120:60

Fix Detail : # 4

Version: 4

Date: 01/04/2019