

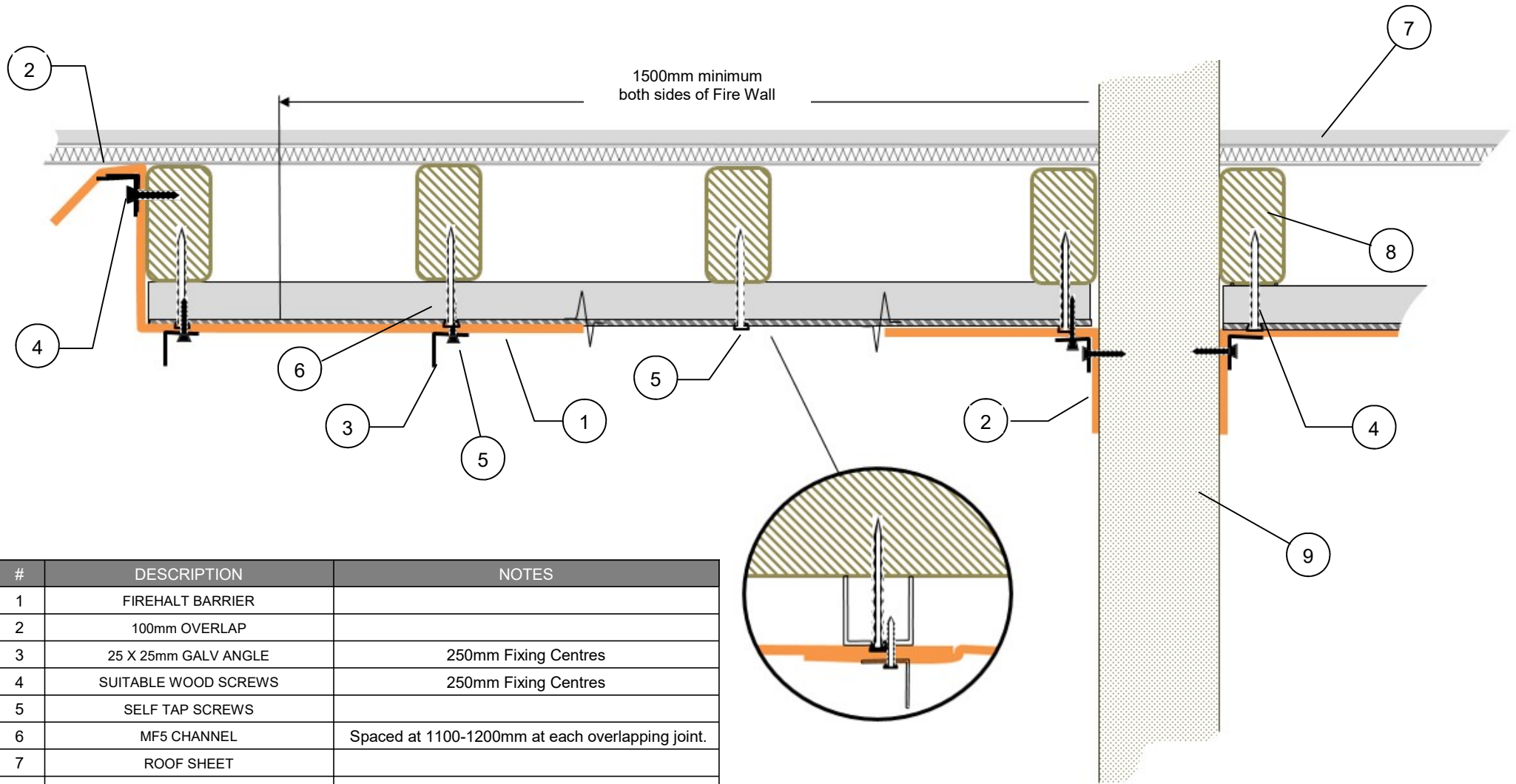
#	DESCRIPTION	NOTES
1	FIREHALT BARRIER / 100mm OVERLAP	
2	FIREHALT COLLAR ROLL	
3	25 x 25 x 0.7mm GALV ANGLE	250mm Fixing Centres
4	50 x 25 x 0.7mm GALV ANGLE	Supporting Angle
5	METAL STUD/METSTRUT CHANNEL	
6	ROOF DEFLECTION PLATE	
7	ROOF SHEET	



Tel : +44 (0)161 344 2484
 Fax : +44 (0)161 344 2486
 Email : sales@firehalt.com
 Web : www.firehalt.com

Fixing detail may not be suitable for all applications. If in doubt seek assistance from our technical staff or another qualified person before installation

Title: Horizontal Control Zone - With Purlins	Products: Firehalt Barriers : Ultralite 60 Firehalt 60:30 Firehalt 120:30 Firehalt 90:60	Fix Detail : # 13
		Version: 2
Certification Ref: IFCC 1336		Date: 05/03/2018



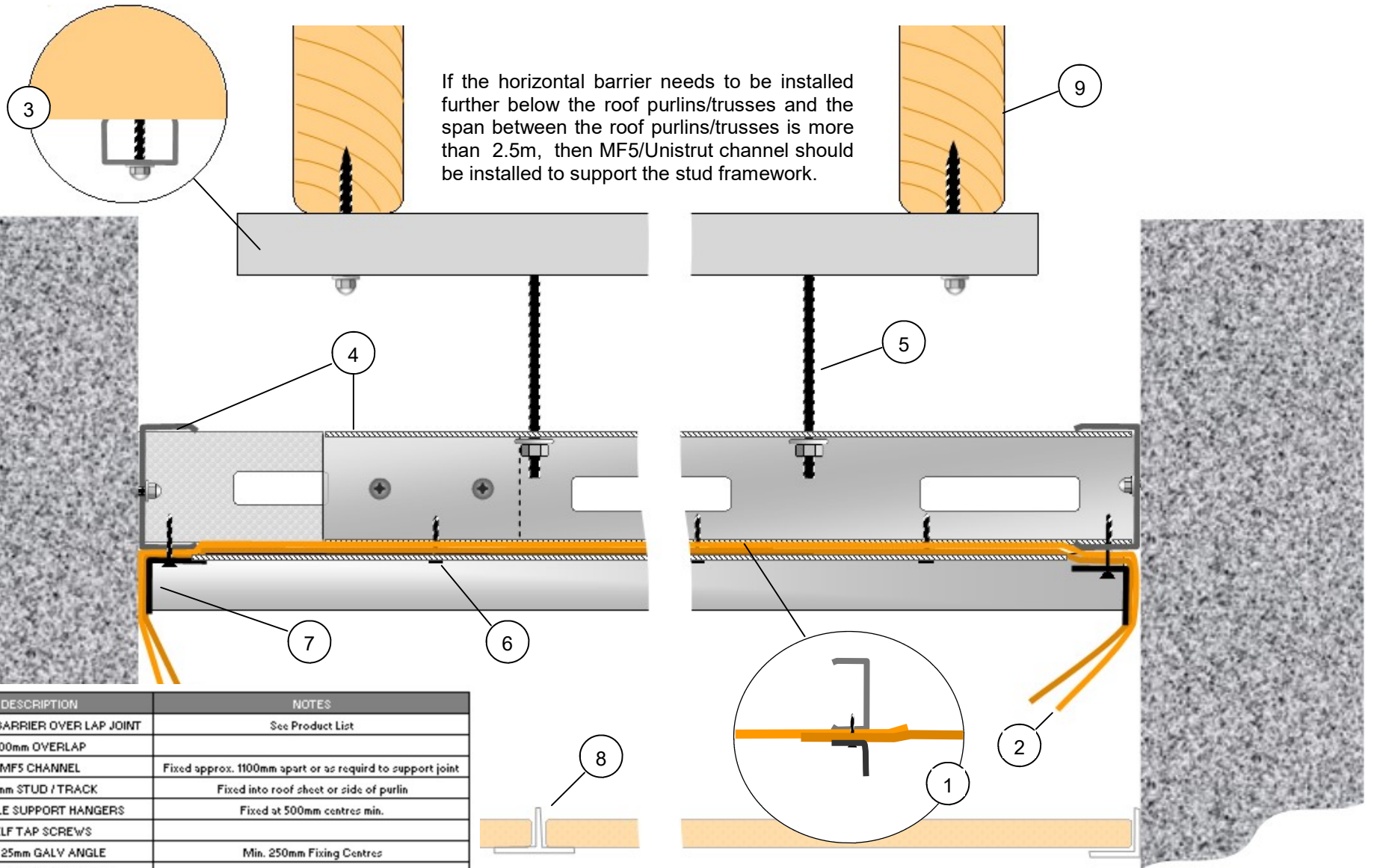
#	DESCRIPTION	NOTES
1	FIREHALT BARRIER	
2	100mm OVERLAP	
3	25 X 25mm GALV ANGLE	250mm Fixing Centres
4	SUITABLE WOOD SCREWS	250mm Fixing Centres
5	SELF TAP SCREWS	
6	MF5 CHANNEL	Spaced at 1100-1200mm at each overlapping joint.
7	ROOF SHEET	
8	ROOF TRUSSES/PURLINS	
9	COMPARTMENT/FIRE WALL	



Tel : +44 (0)161 344 2484
 Fax : +44 (0)161 344 2486
 Email : sales@firehalt.com
 Web : www.firehalt.com

Fixing detail may not be suitable for all applications. If in doubt seek assistance from our technical staff or another qualified person before installation

Title: Horizontal Control Zone - Across Purlins	Products:	Fix Detail : # 10
	Firehalt Ultralite 60 Firehalt 60:30 Firehalt 120:30 Firehalt 90:60	
Certification Ref:		Date: 05/03/2018



If the horizontal barrier needs to be installed further below the roof purlins/trusses and the span between the roof purlins/trusses is more than 2.5m, then MF5/Unistrut channel should be installed to support the stud framework.

#	DESCRIPTION	NOTES
1	FIREHALT BARRIER OVER LAP JOINT	See Product List
2	100mm OVERLAP	
3	MF5 CHANNEL	Fixed approx. 1100mm apart or as required to support joint
4	50 mm STUD / TRACK	Fixed into roof sheet or side of purlin
5	SUITABLE SUPPORT HANGERS	Fixed at 500mm centres min.
6	SELF TAP SCREWS	
7	25 X 25mm GALV ANGLE	Min. 250mm Fixing Centres
8	EXISTING CEILING SYSTEM	
9	ROOF PERLINS	



Tel : +44 (0)161 344 2484
 Fax : +44 (0)161 344 2486
 Email : sales@firehalt.com
 Web : www.firehalt.com

Fixing detail may not be suitable for all applications. If in doubt seek assistance from our technical staff or another qualified person before installation

Title: Horizontal Fire Barrier
 Certification Ref: WF 3324785_2

Products: Firehalt 120:30, 60:30, 30:30 , 90:60 & Ultralite 60

Fix Detail # 14
 Version: 2
 Date: 06/03/2017