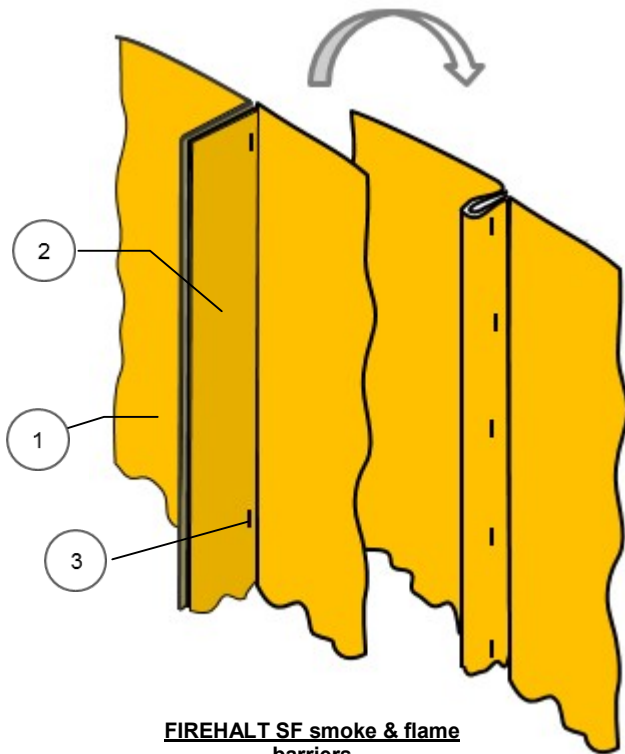


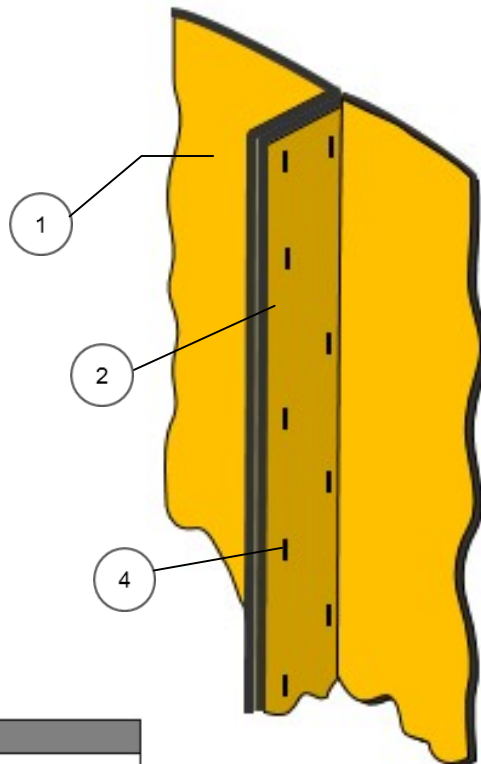
All FIREHALT insulated barriers

2 staggered rows of staples at 100mm centres

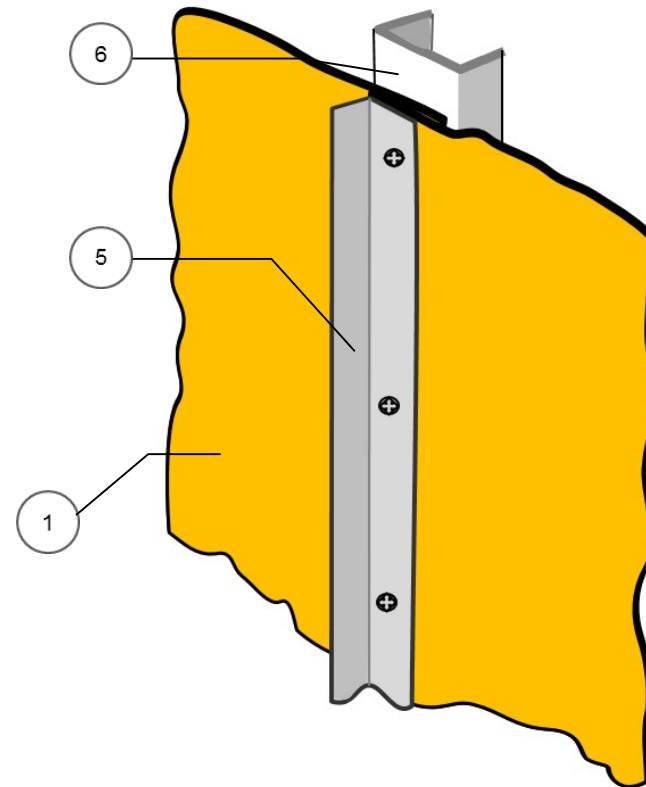


FIREHALT SF smoke & flame barriers

50mm seam folded over to form secure 25mm joint. Stapled at 100mm centres



Additional Metal Support
50mm Overlap Joint Secured with Galv Angle



#	DESCRIPTION	NOTES
1	FIREHALT BARRIER	
2	HORIZONTAL & VERTICAL JOINT SEAMS	MINIMUM 50mm
3	FIREHALT STAPLES	8mm OR 10mm
4	FIREHALT STAPLES	12 mm OR 16mm
5	25 X 25mm GALV ANGLE	FIXINGS AT 250mm CENTRES
6	METAL STUD OR METSTRUT	



Tel : +44 (0)161 344 2484
 Fax : +44 (0)161 344 2486
 Email : sales@culimeta-saveguard.com
 Web : www.firehalt.com

This fixing detail is for guidance purposes only. Seek approval from Building Control or a qualified fire engineer before installation

Title: Standard Joining Seams
Certification Ref: All

Products: All SF and Insulated Barriers
--

Fix Detail : # 4
